



# Joint Clinical Meeting

---

OSCE May 2007

QEH



# Question 1

---

- M/40
- IVDA
- Right buttock painful swelling after self injection for 1 week
- Unable to walk

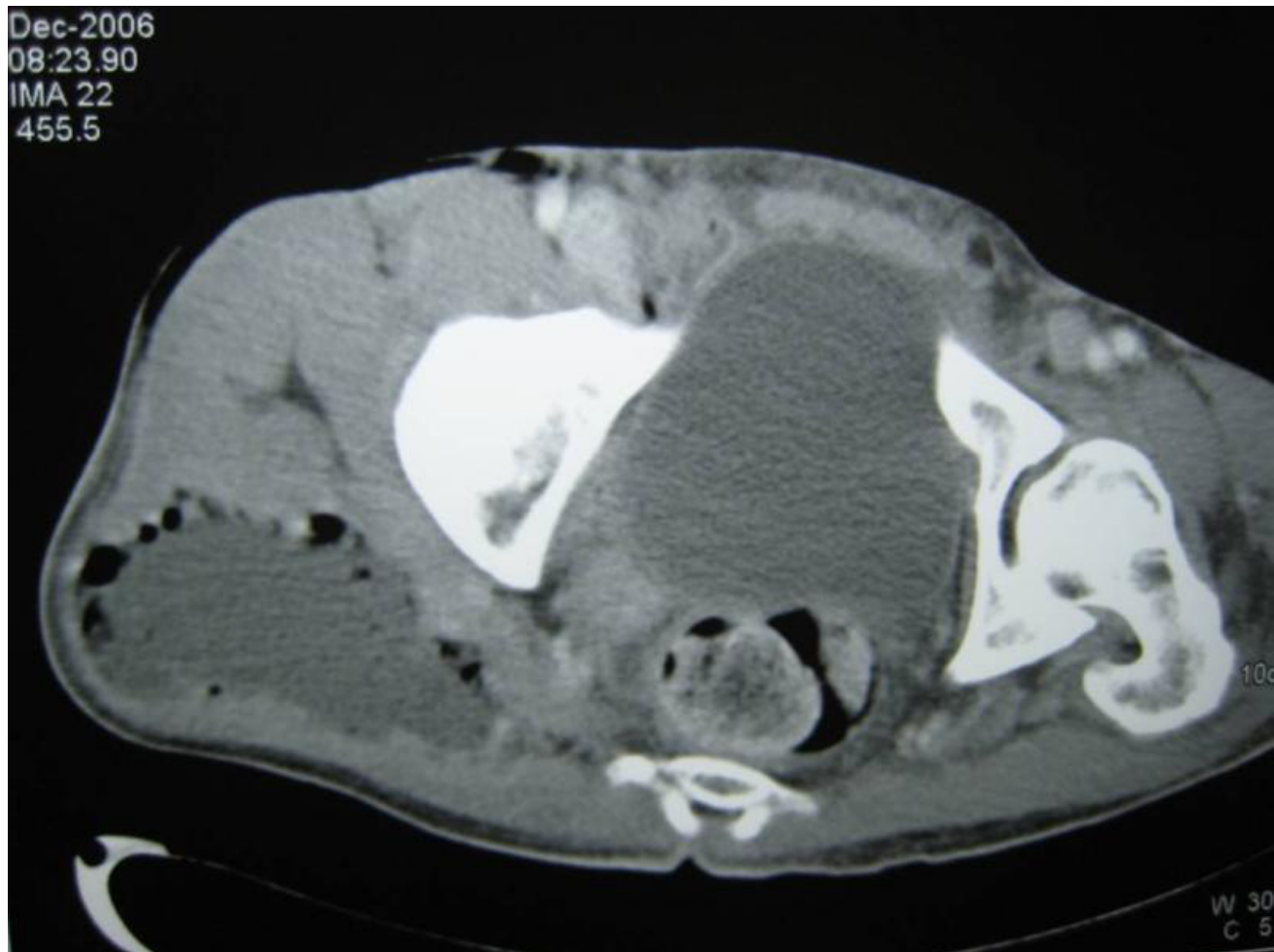
# Question 1

---



# Question 1

---





# Question 1

---

1. What are the X-ray findings?
2. What are the abnormalities shown on the CT scan?
3. What is the diagnosis?
4. How would you treat this patient?



## Question 2

---

- F/44
- Abdominal pain for 4 days

## Question 2

---





## Question 2

---

1. Comment on the AXR.
2. What are the ddx?





## Question 3

---

- M/76
- Low back pain for 4 weeks
- No definite history of injury

# Question 3

---





## Question 3

---

1. What are the abnormalities in the X-rays?
2. What are the differential diagnosis?



## Question 4

---

- M/41
- Brought by police for physical examination

# Question 4

---





## Question 4

---

1. What are the abnormal X-ray findings?
2. What is the diagnosis?



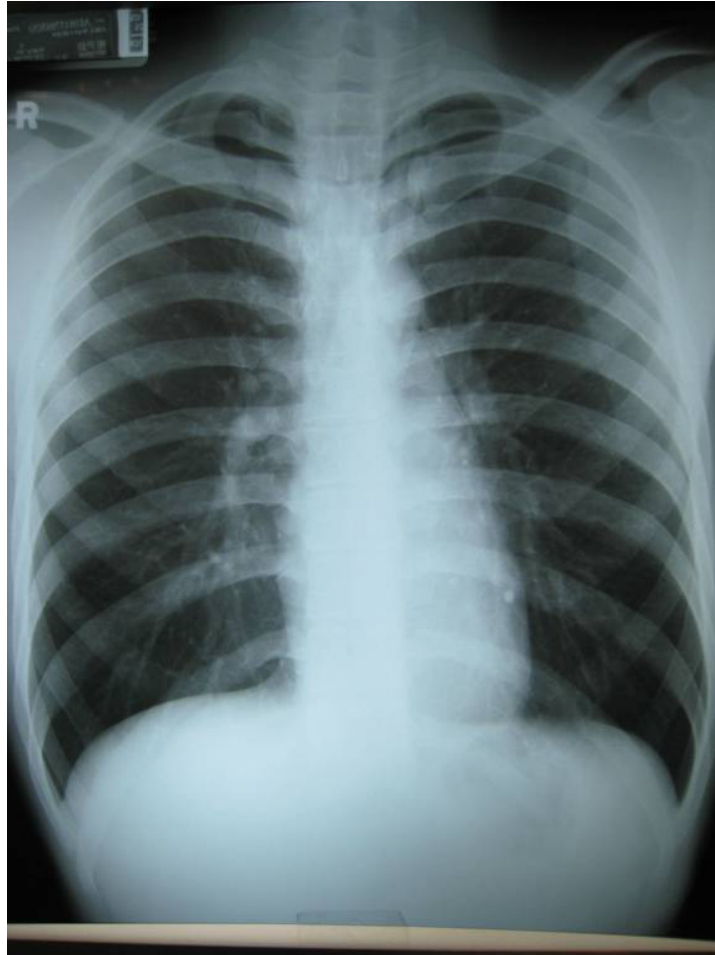
## Question 5

---

- M/20
- Sudden onset of SOB and chest pain for 2 hours

# Question 5

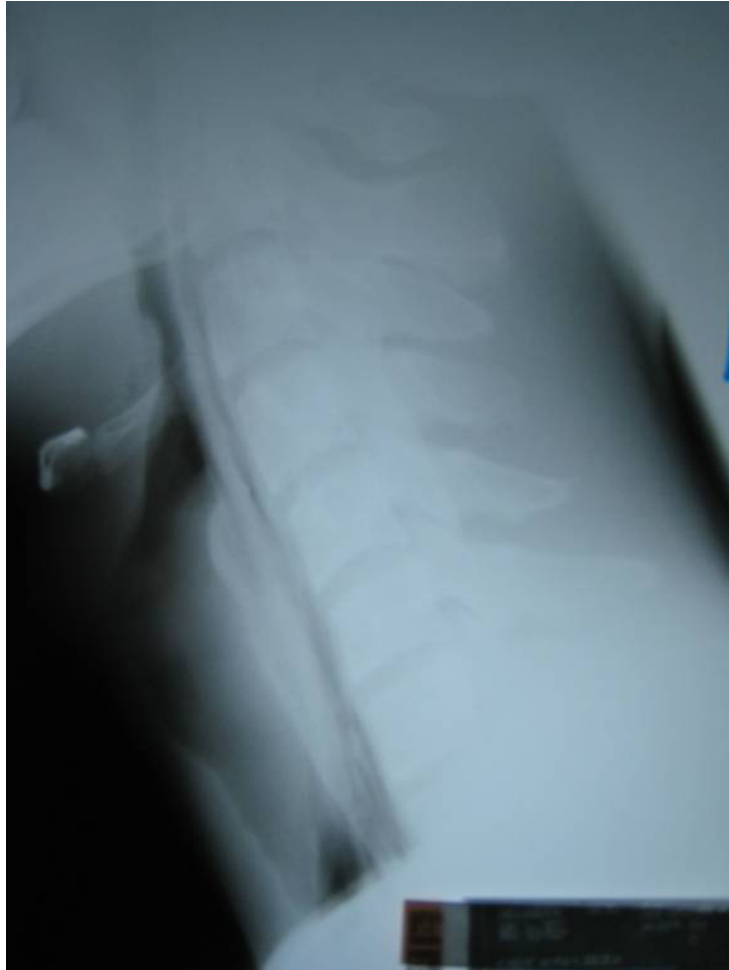
---





# Question 5

---





## Question 5

---

1. What are the abnormalities in the Chest and neck X-rays?
2. What is the diagnosis?
3. Name 2 investigations for this patient.



## Question 6

---

- M/46
- A/A victim
- Face hit by fist
- Left facial swelling and pain

# Question 6

---





## Question 6

---

1. What are the abnormal X-ray findings?
2. What is the diagnosis?
3. Name the components of the diagnosis.
4. What are the initial management?



## Question 7

---

- M/77
- Epigastric distension for 1 day

# Question 7

---









## Question 7

---

1. What is the abnormal X-ray findings?
2. What is the abnormal finding on the clinical photos?
3. Any other abdominal physical sign will you expect to find in this patient?
4. What are the ddx?