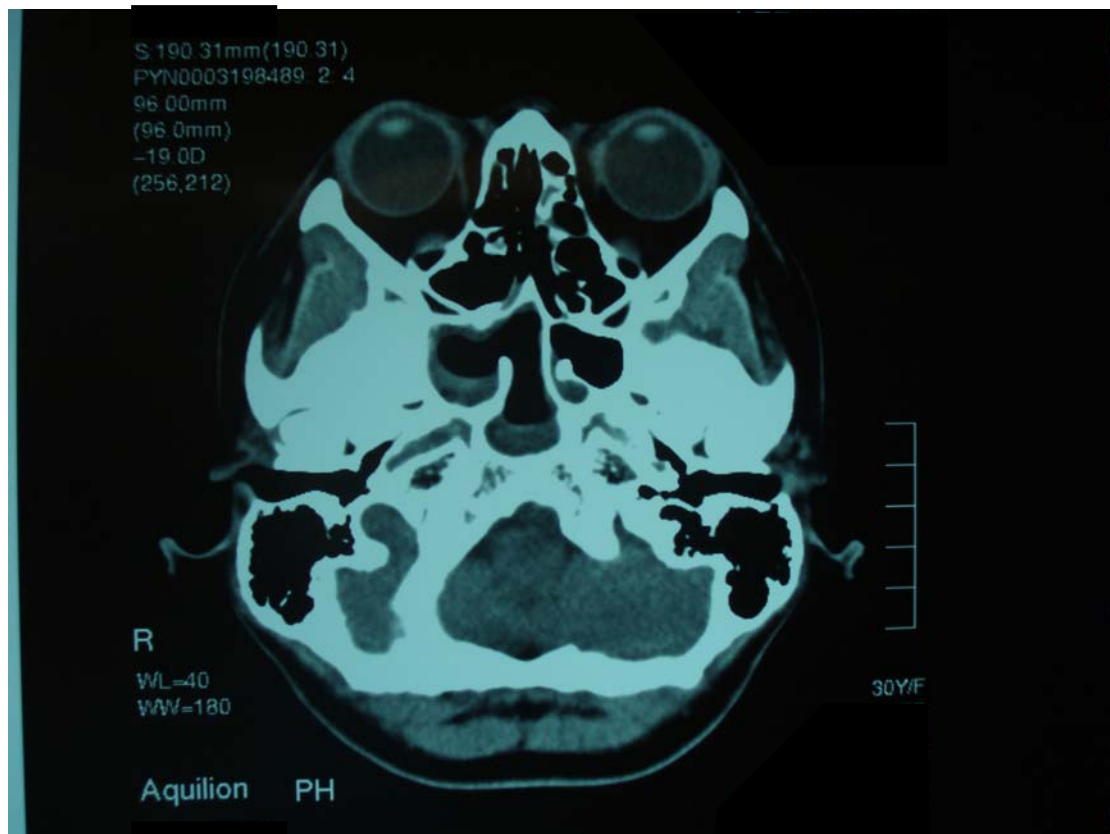


OSCE August 2007

PYNEH

1. A 30-year-old lady complained newly onset of headache for 7 days. She also had a low-grade fever around 38C. She was admitted to the EM ward for CT brain.
 - i. Point out the abnormalities?
 - ii. What is your treatment?





2. A 54-year-old lady complained dysuria for 1 day. On physical examination, the doctor palpated a >10cm tender mass over her lower abdomen. Please refer the plain KUB film:
- Point out the abnormal findings.
 - And give your clinical diagnosis.



3. A 52-year-old man fell with injury to his left wrist on the day of presentation. There was significant local tenderness and impaired range of movement. Please study his X-ray of left wrist:
- i. Point out the abnormalities.
 - ii. What is your management plan?



4. A 23-year old man complained sorethroat, cough and fever for 3 days. The attending doctor took and chest X-ray:
- i. Point out the abnormality?
 - ii. What is your treatment?



5. A 33-year-old female had her right ankle sprained 3 days ago. Please spot the abnormality from her ankle X-ray.



6. A 55-year-old male was referred by GOPC doctor for hypokalaemia of 2.7. He was a chronic smoker and having hypertension for 5 years. He was labeled as natrilix-induced hypokalaemia 1 year ago and his medication was changed to metoprolol. However, his potassium has been low persistently despite he was put on slow-K 1200mg per day. His CBC and L/RFT were otherwise normal. From each of the investigation below, comment whether it is useful, and if yes, the implication on the possible underlying cause of his condition.

- i. Arterial blood gas
- ii. Spot urine potassium and 24 hour urine potassium
- iii. Chest X-ray
- iv. Colonoscopy